



# Back Country Horsemen of America

## Minnesota

NOVEMBER 2016

### **BCH of MN Annual General Membership Meeting**

*Saturday, Jan 7, 2017*

*11:00 PM - 2:00 PM*

**University of Minnesota  
Leatherdale Equestrian Center**

See page 4 for details

#### **SPECIAL POINTS OF INTEREST:**

- *Luce Line Trail Work Day*
- *Eileen Schwankl Menefee  
NE Director*

#### **INSIDE THIS ISSUE:**

PRESIDENTS NOTE	2
LUCE LINE WORK DAY	3
GENEAL MEMBERSHIP MEETING	4
BCH-MN OFFICERS	4
Eileen Schwankl Menefee NE Director	5
OCTOBER MINUTES	6
NOVEMBER MINUTES	7
Start a New Chapter	8
Volunteer Report	9
Volunteer Hour Definition	10
Volunteer Hours 2016	11-12
Volunteer Form Example	13

### **Report Volunteer Trail Work Hours**

Volunteering is our clout. Volunteering has a positive effect when talking with land managers. It shows that as a user group we take responsibility for keeping our public lands in good condition for future generations.

Report all volunteer hours to

[bchminnesota@gmail.com](mailto:bchminnesota@gmail.com)

And

[rlwright@frontiernet.net](mailto:rlwright@frontiernet.net)

See page 9 for more details

## NOTE FROM THE BCH-MN PRESIDENT

Fall 2017

Marvin Breitreutz, Renville, MN

Back Country Horseman of Minnesota (BCH-MN) has been somewhat quiet the past several months but it has been making strides forward. We are still working on establishing official local chapters and building a larger member base.

I would like to welcome Eileen Menefee as a new director to BCH-MN. Eileen has joined in on several of our conference calls and expressed a willingness to help and serve on the BCH-MN Board. It was voted to add Eileen to the current board until the annual meeting at which time we will hold election for all director positions.

BCH-MN has been holding monthly conference calls at which time we invite members to join in on the call. All members are welcome to join in. Members will be notified of a conference call, time and call in number by email or Facebook.

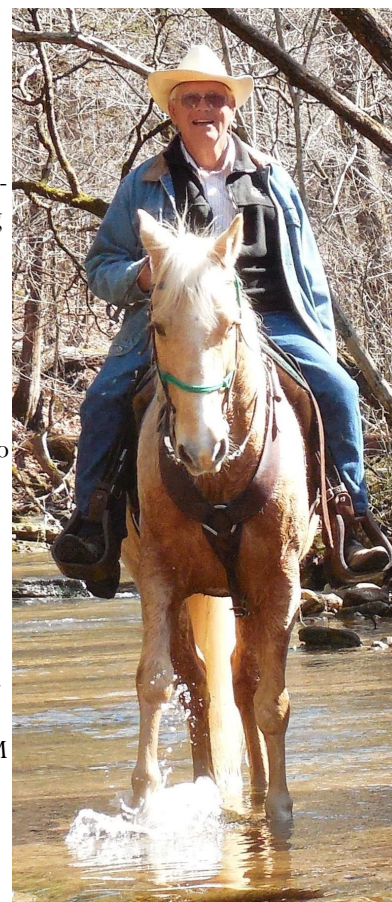
This past summer was very wet, making it hard to schedule any work days. It took several attempts but we finally were able to complete a project on the Luce Line Trail near Winsted, MN in October.

The 2016 year end is coming fast. Your board has made plans for our first Annual Meeting on January 7<sup>th</sup> in the conference room of the University of MN Leatherdale Equine Center on the St Paul Campus of the University of MN. The meeting will start at 11 AM with plans to tour the University Equine Hospital and conclude by 2 PM. See more details in this newsletter.

Being this will be the first official annual meeting of BCH-MN we have a list of required agenda items which include:

- \* President's Report
- \* Secretary and Treasurer Reports
- \* Discuss the importance of establishing local chapters and how can BCH-MN help
- \* Set membership dues for 2017
- \* Elect directors and officers
- \* Elect national delegates and set the expense allowance to the national meeting
- \* Establish committees as needed and appoint committee leaders
- \* 2018 annual meeting

When you think of it, for just being formed in Feb of this year, we have 62 members and we are well on our way!



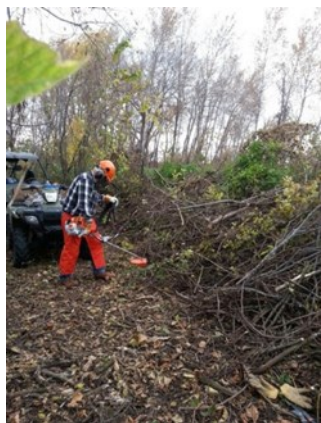
Trails worth  
having are  
worth working  
For

## BCH of MN - First Year - First Project - Luce Line Trail

By Ken Olson, Pine Island, MN.

On Feb 8, 2016 the organizing committee of Back Country Horsemen of MN adopted their by-laws and a few months later officially became a non-profit organization and were accepted as a new state organization by BCHA at the 2016 Annual meeting. Many of the BCH-MN members have been actively involved in horse trail and campground maintenance work for several years through the Minnesota Trail Riders Association and other groups. But now it was time for BCH of MN to get on the map and organize a trail work project of our own!

The Luce Line horse trail (an abandoned railroad bed that runs from western MN all the way into the Twin Cities of Minneapolis and St Paul) runs parallel to the paved bicycle trail. A 1/3 mile section of the horse trail between Silver Lake and Winsted was very wet and needed to be moved to drier ground on the other side of the bike trail. The trouble was that there were a lot of trees, brush and tall weeds to be cleared. A good "starter project" for a "start-up" organization!



Three Backcountry Horsemen members met with the DNR Trail Manager, Kristy Rice, in July to scout out the work and make plans. Since the project seemed like it would take 2 days, the dates of Sept 9 and 10 were chosen. A trailhead parking area near Silver Lake was determined to be an overnight camping spot. Members were notified and things were all set.

BUT the summer of 2016 was one of the wettest ever recorded in Minnesota history! A week before the work days the reroute trail area was partially under water and the mosquitoes were so thick that no one was going to be able to work! So "plan B" was developed - reschedule to Oct 14 and 15 with hopes of dry weather.

On Oct 10th a phone call to Kristy Rice (DNR) determined that things were looking "pretty good" and in *Minnesotan* that means "we go for it"! Since a couple of our workers were busy harvesting corn and soybeans we determined that we needed to start early on Saturday and if we didn't get done, finish on Sunday. Five eager-beaver workers showed up on Saturday with the right tools and ready to work. To our delight by mid afternoon we had exceeded our expectations and completed the re-route!

As the photos show - there was a lot of brush and quite a few trees that needed to be removed but we were up to the task and with the use of our President's pull-behind brush cutter, the trail was open and ready for use. One wet spot will require some gravel but the DNR can handle that so riders should have a good trail by next spring.





## **BCH of MN Annual General Membership Meeting**

*Saturday, Jan 7, 2017*

**University of Minnesota Leatherdale Equestrian Center**

**1801 West Dudley Ave. Falcon Heights, MN 55113**

(On St Paul Campus of U of M - Just west of the MN State Fair Grounds)

The first annual General Membership Meeting of the Back country Horsemen of Minnesota will be held in the Conference room of the U of M Leatherdale Equestrian Center in Rosedale from 11 AM to 2 PM on Jan 7, 2017. President, Marvin Breitkreutz, will lead the meeting (agenda items listed in the President's Column in this newsletter). The meeting will include a tour of the Equine Center and Hospital, lunch, and the business of our new organization.

The Board of Directors hopes that this special first general membership meeting place will encourage all BCH-MN members to attend and become active in our organization. New officers will be elected for 1 year terms and directors for 2 year terms.

A reminder of the meeting will be sent to all members a week or two prior to the meeting but be sure to **mark this date on your calendars now!**

**PRESERVE  
PROTECT  
MAINTAIN**

---

### BCH-MN STRUCTURE

BCH-MN was officially formed in February of 2016

BCH-MN elected a slate of Officers and Directors

Marvin Breitkreutz, President	320-212-9843	heritage@rswb.coop
Russ Wright, Vice President	507-775-2512	rlwright@frontiernet.net
Ken Olson, Secretary	507-356-8686	oakridgefarm244@gmail.com
Barb Partington, Treasurer	651-345-9909	bpartington2014@gmail.com

## **Eileen Schwankl Menefee - BCH of MN NE Director**

### **Representing BCH-MN for Cut Foot Sioux Review**

Hello all you Horse Nature Loving People! I am Eileen Schwankl Menefee from Squaw Lake, MN. I can't tell you how extremely excited I am to represent MN northeast region for the BCH-MN. I have ridden the trails for the last 13 years on my MFTs, Dodge and Laddie, and now my new to me, TWH, Charley Pride. My husband, Ed and I have a family farm with around 40 million head of Bees, LOL, Bar Bell Bee Ranch. So if you need some sweetening up we are the ones to call.

One of my goals is to increase the membership of BCH-MN with horse riders up here in the north-woods. Secondly is to continue to keep the trails open to equestrian use by advocating for the BCH-MN to the government agencies involved in managing the trails. Thirdly is to keep up with improving the horse camps by organizing and assisting with projects deemed necessary by the riders.

I was able to attend the Chippewa National Forest Regional Forester meeting in Cass Lake on Aug 30, 2016. There was agreement by all parties that trails should continue to be shared if possible by all, hikers, bikers, horse riders, and atv users as we can aide each other with the maintenance. The Forest Service has reduced staff so more volunteers are needed to keep up with trails and campgrounds. One of the big complaints was the continual movement of supervisors and foresters in the national forest offices. By the time the industry and users get the new hire on board with the projects, they transfer out of here to another location. Unfortunately there is no mandate to have them stay. Over all the parties at the meeting agreed that the Chippewa National Forest is well managed.

My first project is Cutfoot Sioux Horse Camp located in the Chippewa National Forest north of Deer River, MN which has not been kept up to speed with maintenance and improvements for the size of rigs used by trail riders today. This year I am able to write the grants to get material under the high lines and to begin to brush out around the campsites to make them safer and larger for the users. Hopefully this is the first step to getting more group sites and more high lines so we can accommodate more horses and larger horse trailers in the sites. I am encouraged by the cooperation from Christine Brown Recreation Specialist for the Chippewa. This year, 2017, is a year of review for the campgrounds so hoping it will lead to more improvements in the following years.

I welcome any input from any of you in ways to help your camping and riding enjoyable and safe. Please feel free to email me [eileenm56672@yahoo.com](mailto:eileenm56672@yahoo.com) or call 218-259-0414. Please consider volunteering to help with the projects that we will be completing. Even if you can't physically run a brush hog or chainsaw you can always offer moral support and lemonade! Happy Trails



**BCH-MN**  
501(C)3 NON-PROFIT

---

**WE ARE ON THE WEB**  
**WWW.BCHMN.ORG**

---

*JOIN US IN PRESERVING  
AND MAINTAINING  
TRAILS IN MINNESOTA*

## BCH-MN REGIONAL DIRECTORS NEEDED

One of the strengths of BCH state organizations is the establishment of "local" or "regional" chapters within the state. The members in these chapters are the eyes and ears of the organization. Through these chapters the organization can see what needs to be done and create the opportunities for riders to fulfill the mission of BCH in MN - helping maintain trails and keep trails available to horses.

2016 is our formation year. The officers have been busy getting things set up. We are at the point where it would be good to expand the Board of Directors to include regional directors on the state Board. Article VII Section 4 of the BCH-MN by-laws says: *Each Region, when established, shall elect a Regional Director and Alternate from their membership at the annual meeting to serve as a regional representative to the State Board of Directors. These regional directors shall serve two year terms.*

As we get BCH-MN rolling, the officers are asking for members to step forward and volunteer to be a director for your area of the state - i.e. northwest, northeast, west central, east central, southwest or southeast. By doing this we can begin to establish chapters around the state and expand our ability to observe needs, organize activities and enhance our influence. We hope to begin forming local/regional chapters in 2017.

We ask that all members consider volunteering to become a director for your part of the state. Like the President says - "If we don't get any volunteers we may have to start twisting some arms!!!"

## Start a New Chapter

If there is not a chapter in your area, it only takes a small group of motivated individuals to make a difference and to start a new chapter.

We are willing to come to your group and talk Back Country Horsemen of Minnesota.

BCH-MN has a 501(c)3 non-profit status.

This non-profit status will flow down to BCH chapters in Minnesota.

For more information contact any of the officers or email [bchminnesota@gmail.com](mailto:bchminnesota@gmail.com)

**Back Country Horsemen - Minnesota**  
**Conference Call - 8:30 p.m. Monday, Oct 10, 2016**  
**Minutes from conference call meeting**

Present - Marvin Breitkreutz, Ken Olson, Eileen Menefee

President Marv Breitkreutz called the meeting to order at 8:30.

1. Motion to approve the minutes of the Sept 6th meeting as written - S/P
2. Treasurer's report - Balance in checking account - \$2098.95 by Ken based on recent bank statement. Motion S/P.
3. **Chippewa National Forest** - Eileen has nothing more to report after the last meeting. She will talk to the managers at Cut Foot, Togo and Stony Brook about MTRA grants as a source of funding for projects. She is also confident that she can get a NE MN Chapter of BCH-MN started early in 2017 to start organizing projects for that part of the state. Eileen will continue to represent BCH-MN at future meetings with the Forest Service and DNR.
4. **Luce Line Work Project** - The Sept 8 - 11 work days were rescheduled Oct 13 - 16 subject to adequate working conditions. With the wet fall and people busy with fall harvest and "end of the season" riding, we discussed reducing the work days down to Sat and Sunday (not including Friday if we couldn't have enough help). Ken and Marv will make this determination and inform everyone involved.
5. **2017 BCH-MN Annual Meeting** - The meeting is set for Sat Jan 7, 2017. Ken and Barb have done some work on locations. Ken will continue to work on this. One of the possibilities is Cabelas at Owatonna/Medford. Others are being looked at including the U of M Equestrian Center in St Paul. Ken will continue to work on this.
6. Motion to adjourn the meeting at 9:35 - S/P.

Next Meeting - Conference call at 8 pm on Tuesday Nov 1.

Ken Olson

BCH-MN Secretary

**SUPPORT BACK COUNTRY HORSEMEN OF MINNESOTA WITH YOUR  
HOLIDAY SHOPPING PURCHASES**

IF YOU ARE AN AMAZON.COM SHOPPER, YOUR PURCHASES CAN HELP  
SUPPORT NON-PROFITS OF YOUR CHOICE. SIMPLY MAKE YOUR  
PURCHASES AT SMILE.AMAZON.COM (NOT WWW.AMAZON.COM OR THE  
MOBILE APP) AND A PORTION OF YOUR PURCHASE PRICE WILL BE  
DONATED (AT NO ADDITIONAL COST TO YOU) TO THE NON-PROFIT YOU  
CHOOSE WHEN YOU FIRST VISIT THAT PAGE.

[HTTP://SMILE.AMAZON.COM/CH/81-1466089](http://smile.amazon.com/ch/81-1466089)

**Back Country Horsemen - Minnesota**  
**Conference Call - 8:00 p.m. Tuesday, Nov 1, 2016**  
**Minutes from conference call meeting**

Present - Marvin Breitreutz, Russ Wright, Eileen Menefee, Ken Olson

President Marv Breitreutz called the meeting to order at 8:00.

1. Motion to approve the minutes of the Oct 10th meeting as amended - S/P
2. Treasurer's report - No report - treasurer on a cruise! probably the same balance as Oct 10th.
3. Fall/winter newsletter -  
Russ has sent an updated Volunteer hours report. He will write a short introduction for the volunteer report in the newsletter to encourage people to report their hours. We'll print the 2 page "chart" report  
the other articles include a President's report, Luce Line project report, minutes of the Oct 10 and Nov 1 meetings, annual meeting notice, Chippewa National Forest report.  
Barb will put into newsletter format.  
We'll try to have the newsletter out in mid November
4. 2017 BCH-MN Annual Meeting - The meeting is set for Sat Jan 7, 2017. Ken has arranged to have it at the U of M Leatherdale Equestrian Center on the St Paul Campus of the U of M. It will cost from \$100 to \$150 for the facility. The plan is to include a tour of the facility and our business meeting with lunch arrangements to be worked out. Could do lunch from a local Subway, pizza place or we could consider bringing in our own food. If we have the tour we wouldn't need a speaker.
5. Chippewa National Forest - Eileen reported that she will be the person putting the grant info together for work projects applying for MTRA and MHC grants 2017. She will coordinate with the Forest Service person on this.
6. Meeting adjourned at 8:58.

Next Meeting - not set - to be determined





## Why and How BCH-MN members and friends report volunteer trail work hours

You proudly call yourself a “Trail Rider”. You have an unexplainable bond with that horse of yours. The hours that you spend on the back of this friend are as rewarding as anything you know. You dream of traveling to all kinds of places to share these experiences with friends.

You appreciate the fact that you and your friends have places where you can recreate with your horses and you realize that these public places must be supported if they are to be preserved. You willingly volunteer to help keep these places open and properly maintained. You know that the public agencies are always budget constrained and were it not for our assistance the alternative would be closure of some of these trails. You have a good feeling in your gut and you see what is in it for you, realizing that people need to see what is in it for them before they get involved in anything.

Now you need to understand that a remaining piece of work must be completed. You need to report your volunteer efforts so that the public agencies are aware of your help. Back Country Horsemen chapters, like ours here in Minnesota, were established to work with the public agencies to preserve our recreational heritage. Besides helping to do the volunteer assistance projects, BCH wants to make sure that the public agencies are aware of our efforts so that they are spared the need to reduce facilities for lack of support. BCHA tabulates all of the volunteer efforts and makes sure that this information is widely publicized. They have been reporting hundreds of thousands of hours nationally worth tens of millions of dollars each year.

That is why it is so important that we take the time to log all of our efforts. Here in Minnesota in our first year we have logged over 800 hours as of this writing and we hope that many more of you will send in your numbers to complete the year. As Vice President of BCH-MN it is my job is to coordinate this reporting effort and to submit this information to the national BCHA and to the public agencies we have worked with. We use spreadsheets to log this information. We have a template available on our website and on our drop-box file sharing area so that you can use it to create your report, but if you are not comfortable with these tools just send me the information in any form that you would like. I can contact you later if I need more information.

Send your reports to [bchminnesota@gmail.com](mailto:bchminnesota@gmail.com) and [rlwright@frontiernet.net](mailto:rlwright@frontiernet.net)

or 602-341-8145 for questions

## VOLUNTEER HOURS—DEFINITIONS

The rest of this document familiarizes you with the information we record. Here are the definitions for the fields which we use to record volunteer events:

<b>Date(s)</b>	Date(s) that your event was held.
<b>Names</b>	Names, phone or email, of everyone who participated: You will usually have a volunteer signup sheet that everyone must sign: e.g. DNR Volunteer Agreement & Report
<b>Place</b>	Name of the public facility: e.g. state forest, state park, or county park
<b>Agency:</b>	Governing agency, e.g. DNR or County where facility is located.
<b>Work type</b>	Description of the project work: e.g. Trimming and brushing on Trail xx, or cleanup at campground or using chain saws to clear trees, etc.
<b>Work hours</b>	Total number of hours that everyone spent at work. There are two types, <b>basic</b> and <b>skilled</b> . These can be hours for basic work like trimming trails, either on foot or on horseback, and then there are hours for skilled work like operating a chain saw or leading a pack horse or operating power equipment.
<b>Travel time</b>	Total number of travel hours for everyone, to and from the project.
<b>Vehicle miles</b>	Total number of miles driven to and from the project for small vehicles other than horse trailers or equipment trailers. Only vehicle drivers can count these.
<b>Trailer miles</b>	Total number of horse trailer or equipment trailer miles driven to and from the project. Only trailer drivers can count these.
<b>Power equip</b>	Total number of hours using equipment such as chain saws or four wheelers.
<b>Heavy equip</b>	Total number of hours using heavy equipment such as tractors or loaders
<b>Horses</b>	Total number of horses used on the project and total number of horse days if the project was more than one day long

Once you get familiar with these items they are not that hard to remember to keep track of for your projects. The first five items are obvious and just getting everyone's name is usually the most effort. We will be suggesting forms that you can print out ahead of time to have with you and a template spreadsheet you can use. The last five items are logical breakouts because when BCHA accounts for volunteer efforts they assign a dollar value to each type of activity so that we can report to the public agencies, not just the number of volunteer hours but also the money equivalent value of the work. We all know how much more money talks!

The dollar values assigned for 2016 will be available on the official BCHA website soon – we only need them at year end. The values are derived from US Labor Dept official guidelines and are approximately as shown here.

Basic labor	\$22.50 per hr	This rate applies to basic trail work, administrative work, trail reconnaissance work etc. all of which can be counted.
Skilled labor	\$35.00 per hr.	This rate applies to any power tools or heavy equipment operation or pack horse skills
Vehicle mileage	\$0.50 per mile	For cars or trucks not hauling anything..
Trailer mileage	\$1.10 per mile	This is for trucks pulling horse trailers or equipment trailers.
Power equip	\$26	Actual hours of operation
Heavy equip	\$81	Actual hours of operation
Horse day	\$100	Don't we wish they only cost us this much?

Send your reports to [bchminnesota@gmail.com](mailto:bchminnesota@gmail.com) and [rlwright@frontiernet.net](mailto:rlwright@frontiernet.net)

or 602-341-8145 for info

Back Country Horsemen of Minnesota - Lake City, MN																
Last Name	First Name	Date	Agency	District	Forest Name	Wilderness miles	Description	Trail No.	Trail Work Hrs.	Skilled Work Hrs.	Education Hrs.	Public Mtg. Hrs.	Admin Hrs.	Trail Recon Hrs.	Travel Time	Pers Veh Miles
BCH-MN/UMN/VT members																
Fischer, Gunderson, Knutsq		4/3/2016	Renville Co.	SW	Shalbetken Pk		Deadfalls on trails, trash pick up		10.5						3	90
BCH-MN/UMN/VT members																
Fischer, Munch, Preuse		4/17/2016	Renville Co.	SW	Shalbetken Pk		Deadfalls on trails, trash pick up, wheelbarrow tire		4.5						3	90
BCH-MN/UMN/VT member		4/17/2016					Trash pick up in campground and park, and on road		16						8	240
Andolf(3), King, Munch, McCoy, Reek, Preus			Renville Co.	SW	Shalbetken Pk											
BCH-MN/ZBE members																
25 people		04/16-17/2016	MN DNR	SE	Zumbro Bottoms SF		numerous trail trimming & campground cleanup projects	NA	172	10			10	48	1222	700
BCH-MN members		05/20/2016	MN DNR	NE	Sand Dunes SF		Meeting and ride with the DNR	NA			10	10	10	8	250	
Partington, Z																
BCH-MN members		05/20/2016	MN DNR	NE	Sand Dunes SF		Meeting with the DNR	NA			4		8	246		
Leary, Wright																
BCH-MN members		05/20/2016	MN DNR	NE	Sand Dunes SF		Meeting and ride with the DNR	NA			10		8	250		
Olson 2																
BCH-MN/MTA members		05/20/2016	MN DNR	NE	Sand Dunes SF		Meeting and ride with the DNR	NA			25		20	500		
Bretkreutz, Dingman, Denn-2, Hubbard																
BCH-MN members		05/24/2016	MN DNR	SE	Zumbro Bottoms SF		work & material details for June projects	NA			3		3	136		
Olson																
BCH-MN members		05/25/2016	MN DNR	SE	Zumbro Bottoms SF		created campground wood signs	NA			3.5					
Olson																
BCH-MN members		05/31/2016	MN DNR	SE	Zumbro Bottoms SF		deliver n ties for Walnut Hill	NA	1.5				1	25		
Olson																
BCH-MN members		06/01/2016	MN DNR	SE	Zumbro Bottoms SF		Erect tie lines at Walnut Hill	NA	20	10			10	300		
Olson, Fitting, Freese, Murphy, Partington																
BCH-MN members		06/04/2016	MN DNR	SE	Zumbro Bottoms SF		National Trails Day proj (ATT)	NA		25			6	300		
Olson, Schroeder, Saylor																
BCH-MN members		06/04/2016	MN DNR	SE	Zumbro Bottoms SF		National Trails Day projects - West Campground	NA	47				10	32	400	
13 Others																
BCH-MN members		06/08/2016	MN DNR	SW	Whispering Ridge, Redwood Trail clearing with chain saws			NA	3	6			1.5		44	
Bretkreutz 2, Gunderson																
BCH-MN/UMN/VT members																

Upper MN Valley Trail Riders Assn  
Amigo Riders members

Add'l Comments

Fischer(2), Gunderson, Reek	08/13/2018	Renzie Co.	SW	Beaver Falls	Removed deadfalls and trail trimming	6					4	120		4	4					
BCH-MNV/MNVTR member	07/11/2018	Renzie Co.	SW	Shalbetken Pk	Removed deadfalls and trash pick up	7				7	210		7	7						
Fischer, Gunderson, Reek, Lien, Hering, Schmidt(2)																				
BCH-MNV/MNVTR member	07/31/2018				Removed deadfalls and trash pick up	6	6			6	141		6	6						
Fischer(2), Gunderson, Reek, Breitkreutz(2), Renzie Co.			SW	Shalbetken Pk																
BCH-MNV members	08/02/2018	Renzie Co.	SW	Shalbetken Pk	Trail clearing	3				2	32									
Breitkreutz 2																				
BCH-MNV members	08/03/2018	MN DNR	SW	Luce Line St Trail	Hutchinson - Luce Line project recon. - Sherman station area	NA				10	340					Recon for Sept 8,9 work event - 1/2 mile route				
Breitkreutz, Olson, Wright																				
BCH-MNV members	08/05/2018	MN DNR	SW	Upper Sioux Agency SP	cleared trails with chain saws	4				3	113		2	2						
Breitkreutz, Maas																				
BCH-MNV/MNVTR member	08/08/2018				Removed deadfalls and trail trimming	6				4	120		4	4						
Fischer(2), Munch, Reek		Renzie Co.	SW	Beaver Falls																
BCH-MNV members	08/30/2018	USFS	NE	Chippewa National Forest	Chippewa NF Planning Mtg				3	2	100					Chippewa multi-use conference				
Menefee																				
BCH-MNV members	08/22/2018																			
Breitkreutz 2		Renzie Co.	SW	Shalbetken Pk	Trail clearing	4				1	32									
BCH-MNV members	08/23/2018																			
Breitkreutz 2		Renzie Co.	SW	Shalbetken Pk	Trail clearing	2				1	32									
BCH-MNV members	08/24/2018																			
Breitkreutz 2		Renzie Co.	SW	Shalbetken Pk	Trail clearing	4	4			1	32									
BCH-MNV members	10/15/2018	MN DNR	SW	Luce Line St Trail	Hutchinson - Luce Line project - Sherman station area - clearing	NA	5			4	226					chainsaw work and 4 wheeler				
Olson																				
BCH-MNV members	10/15/2018	MN DNR	SW	Luce Line St Trail	Hutchinson - Luce Line project - Sherman station area - clearing	NA	5	5		8	226					wheelbarrow and hand tools				
Partington(2)																				
BCH-MNV members	10/15/2018	MN DNR	SW	Luce Line St Trail	Hutchinson - Luce Line project - Sherman station area - clearing	NA	5	5		8	150					tractor and mower				
Breitkreutz(2)																				
BCH-MNV/ZBC members																				
12 people	10/19/2018	MN DNR	SE	Zimbro Bottoms SF	trail trimming, tree wraps & campground cleanup projects	NA	37.8	37.8		14	506	90		2	4	Mark Fitting - organizer, included new fire pits				
Partington(2), Levy, Freese, Fitting, Clark, Spear, Olson(2), Saylor, Dick, Moran																				
BCH-MNV members																				
Totals							380	121	0	52	33	10,234	4,248	30,04	0	170	58	84	4	0
Events	26				Total hours	811														



